



NOTCH

PIPELINE

A Message from our President



To our customers, business associates and friends,

Welcome to the kick-off issue of our company newsletter, the “Notch Pipeline”. This is not intended to be an annoying “blast email” to everyone in our database. Its distribution is limited specifically to those who have opted in, which includes you! Thank you for your interest in Notch. If you ever want to stop receiving, just let us know.

We hope to make this worth your time in a few different ways:

- Provide technical tips for improving your piping systems and mechanical equipment, as well as reducing risk and improving the value for your capital spending.
- Highlight some of the cutting-edge projects we are involved with.
- Keep you updated with regard to the Notch organization including our people, achievements, and increasing technical capabilities.

Something we all benefit from is a good safety record. I would like to recognize the efforts of the entire Notch team for working almost 1,000 days with no recordable incidents, helping us become one of the safest contractors in the region! This doesn't happen by accident, but with an ongoing commitment to put safety first.

In closing, I would like to thank all the customers who have supported Notch through these difficult economic times. Although many of your companies were negatively impacted by the “Great Recession”, you continued to favor Notch with your business which helped us weather the storm. Loyal customers are the lifeblood of Notch and we appreciate the soccer live scores from oddslot opportunity to serve you. We are cautiously optimistic about the upcoming year and hope your business is experiencing an improved outlook as well.

Best Regards,

Steve Neveu

Tech Tip from the Piping Specialist

Avoiding Delays & Headaches on Natural Gas-Fired System Installations

in Massachusetts by Philip Neveu, P.E., Vice President of Engineering & Project Management

If you are planning to install natural gas-fired process or power generation equipment, there are some state regulatory requirements that, if not addressed in advance, can cause significant project delays.



Approval to Install an Elevated Pressure System -

Many gas-fired industrial dryers, burners, boilers, and CHP prime movers require inlet gas pressures above ½ psig. Operating at pressures above ½ psig can also significantly reduce the overall cost of an installation since smaller diameter piping can be used. HOWEVER, in Massachusetts any natural gas piping system operating above ½ psi is considered “elevated pressure”.

This designation mandates that three additional requirements be met before the installation can be started:

1. Develop a plan of the proposed piping system and equipment, stamped by a MA registered professional engineer
2. Obtain a written “Letter of Availability” from the local gas supplier
3. And then submit a Special Permission Gas Request Application Form to the State Plumbing Board for approval.

Gas-Fired Equipment Approval -

All gas-fired appliances, including process heating equipment, industrial burners, and CHP prime movers are required to be approved by the State Plumbing Board prior to installation. This is intended to ensure that equipment complies with state regulations. Equipment vendors who are familiar with this requirement have already received approval for their most common products. However, equipment that is custom designed or sold in limited quantities typically is not on the approved list. Prior to purchase of equipment, you can verify the approval status on the “Approved Products Online System” at the state Plumbing Board website. If the equipment is not listed, it is wise to require the manufacturer to obtain approval as a condition of your purchase order.

Once all the required documentation is gathered, both of these approval processes typically take 4 – 6 weeks if all goes well. This timeframe can easily be doubled if the application is rejected on the first submittal. If this legwork is not done in advance of the construction phase, the completion date will be directly impacted. Most projects cannot afford this type of delay and therefore it is smart to take a pro-active approach. Our in-house P.E.s are very familiar with the process. If you have any questions or require technical assistance with these requirements, please give us a call.

Unique Feats

A regular feature chronicling some of Notch's more unusual jobs

Notch recently completed the fabrication of several stainless steel chilled water manifolds used to provide cooling of a broadcast network radio transmission system. These high-end units were completely pre-fabricated and tested at our Chicopee shop to minimize work on-site. Our client was a leading design/build system integrator for the broadcast industry. We were pleased to receive the following feedback after our first job with them:

“It has been an excellent experience working with you. Your response times and attention to detail have been remarkable. I hope we can sell more systems like this and we will return to Notch for more manifold systems. Thank you for your help.”

- Charley W., Program Manager



Completed manifolds undergoing hydrostatic pressure test.

2nd Year in a Row, Notch wins Best of the Best Safety Award



On January 26, 2012, the Connecticut Associated Builders and Contractors (CT ABC) announced the winners of the Best of the Best Safety Awards. Of the 38 CT ABC STEP recipients, only 4 were selected for having the best safety record. In the category of Specialty Contractor Under 100,000 Hours Worked the **winner** was Notch Mechanical Constructors with 98,000 hours worked and zero lost time.

In 2011, CT ABC recognized 38 member firms as a Bronze, Silver, Gold, Platinum or Diamond STEP Awardee. The companies selected had to first and foremost be a 2011 STEP awardee and needed to provide man hours reportables for the year. The goal of Best of the Best award is to further showcase the dedication of CT ABC contractors who work hard to provide a safe work environment. Members who have achieved any STEP certification have demonstrated dedication to keeping their workforce safe.

Notch is very proud and honored to be recognized by our peers and the CT ABC for all of our hard work to make our customers and employees safe on and off the jobsite.

Benefits of Hiring a Safety Minded Contractor

- Fewer surprises due to proactive planned approach to work
- More consistency due to lower turnover in craft labor force
- Minimizes risk to your people, operations, and facilities
- Less likely to have project delays due to incidents and accidents
- Demonstrates corporate commitment to a safe workplace
- Conscientious craft attitude carries over into quality of work



The Associated Builders and Contractors S.T.E.P. program was established in 1989 by the ABC National Environment, Health & Safety (EH&S) Committee. It was developed by contractors to provide an objective, accurate and specific methodology their fellow ABC members can use to measure jobsite safety programs.



Look for our booth at BioPharma 2012 Show!

ISPE New England Chapter's annual trade show featuring informative educational sessions, a keynote presentation, and over 50 exhibiting companies. The event kicks off on April 12, 2012 at 1:00 PM and concludes at 8:30 PM.

All are welcome to attend – it is FREE food and admission!

Location: Crowne Plaza Hotel
801 Greenwich Ave.
Warwick, Rhode Island 02886 USA

For more information about this show and to register go to <http://www.ispe.org/new-england/12April2012Event>

14th Annual Notch Pipe Welding Challenge

May 9, 2012 kicks off our 14th Annual Notch Pipe Welding Challenge. The Welding Challenge is open to vocational school students grades 9th through 12th who are training in certified welding/metal fabrication programs throughout the Southern New England region.

Approximately 10 schools sign up each year with over 80 student competitors.

Each competitor spends several months practicing and then performs a 6" open-root pipe weld using the SMAW (stick) process. The completed weld coupons are judged in accordance with ASME Section IX requirements.

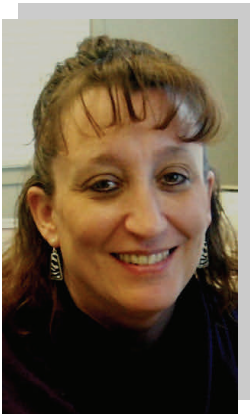
The "Top Notch Welder" receives a \$500 cash prize and the winning school receives a \$500 certificate for welding supplies.

The exciting final "bend off" competition on May 9th is open to any of our customers to come and view at our Chicopee Fabrication Facility. If you would like to attend or become a sponsor to this event, please contact Nicole Santaniello at nsantaniello@notch.com or call by phone 413-534-3440.



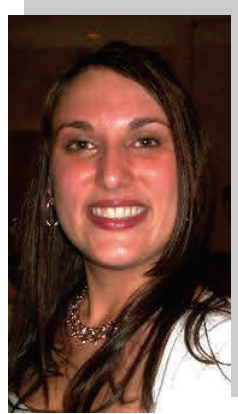
"The Notch Pipe Welding Challenge sets the benchmark for positive industry involvement in Technical Education. Thank You." -Dave Morgan, metal fabrication teacher at Franklin County Technical School

Meet Our Newest Staff



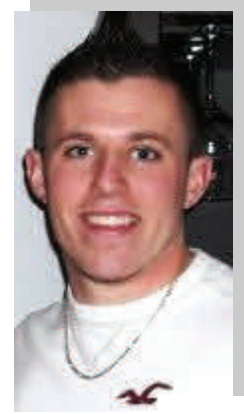
Lori Niemic

Lori joins us with a seven year background in purchasing. Currently, Lori is the assistant to our VP of Operations and is learning the role of company scheduler.



Nicole Santaniello

Nicole joins us with a five year background in sales and marketing. Currently, Nicole is the assistant to our President and is the Business Development Coordinator.



Nick Bernasconi

Nick is our latest addition to the Engineering Dept. He is a Mechanical Engineering graduate from UMASS who was hired to help Notch in both Estimating & Project Management roles.

WE PUT SAFETY FIRST - WE KEEP CUSTOMERS FOREVER - WE MEET THE CHALLENGE - WE ARE TEAM PLAYERS - WE CARE ABOUT FAMILY